

provinsje fryslân  
provincie fryslân 

# Water sports map Fryslân

2021 - 2022 Edition

**Discover the app Watersport**  
Always up-to-date information on the water!  
Free available for iOS and Android.





## “Great to mark new waterways”

Jan Wind, chief technical port authority employee

“We ensure the daily maintenance and management of the Fryslân waterways. With our buoing vessel we ensure that 1000 buoys in Fryslân are located in the correct position. Green drums (pointed) and red drums (blunt) mark the navigation channels. We guarantee a specific depth between the buoys. The buoys are the mile markers on the water. If you are in need of assistance, always relay the number and the abbreviation of the waterway.

Round buoys (red/green or green/red) indicate a split in the waterway. We also place yellow buoys to indicate certain areas. This may include, for example, a resting area for birds starting from 1 October and on 1 May we place the buoys to indicate the high speed areas on the water. In order to know the meaning of the buoys and the navigation sigs, it is important that you regularly consult the Inland Waterways Police Regulations (BPR) which you are also required to have on board ([www.politie.nl/en](http://www.politie.nl/en)).

We usually navigate out of our harbour and storage in Uitwellingerga (near Sneek). I refer to our inventory of buoys as my flower garden. There are so many vibrant colours. It is a joy to be allowed to mark a new waterway with the buoys.”

“I am so very proud (grutsk) to be able to do this work. Especially when you consider that we will be operating 40 Fryslân bridges from this station in a couple of years!”



## “Proud to do this work”

Janneke Steensma – Zijlstra, bridge operator

“Together with my colleagues, we now operate fifteen bridges remotely from our central station on the west side of Leeuwarden. We ensure the expedient circulation of navigating vessels and waterway traffic. It is wonderfully rewarding work, every bridge is unique. We are well-trained in the operating bridges remotely. Always being alert is important, not only for me but also for the water sports enthusiasts and waterway users.

A few tips for when you approach a bridge or lock:

- You only need to report in once via the buttoat the bridge or marine radio. Be patient.
- If it's busy or if, for example, an ambulance is approaching, you may be required to wait.
- When the lights turn red/green, you can prepare to head in the direction of the bridge. This is the sign that the bridge will open.
- Be sure to sail quickly under a bridge with a green light, take into account that road traffic is waiting.
- Always follow the instructions of the bridge or lock operator.

# “We are happy to welcome tourists back”

Hilda Dolstra and Arend Jan Brouwer, nautical managers

“We ensure safe and expedient navigation of the navigation traffic in Fryslân. We provide instructions on the water to ensure safe navigation. We supervise big events and take action during calamities. In the summer, we patrol along with the police. We make sure water sports enthusiasts and commercial sailing vessels adhere to the speed limits. On most of the lakes you are allowed to sail at 9 km/ hour. On the Van Harinxma canal and Johan Friso canal you may sail 12.5 km/hour and in the villages and towns 6 km/hour. If you want to sail faster, you can take your speedboat on the high-speed boating areas.

We not only monitor your speeds but we also check age and whether someone has their sailing licence. It is important that when you are on the water, you know how to sail and you know the rules. Almost every ship is required to have a recent copy of the “*Binnenvaartpolitiereglement*” (Inland Waterways Police Regulations or BPR) on board. Operators of fast speedboats (faster than 20 km/hour) are also required to have the following on board: navigation licence, life vests for each person on board, fire extinguisher, safety cord, registration and a registration mark (visible).

“Each season has its own charms, but we are always pleased to welcome the tourists back. Everyday we encounter something new. We know what time our work day begins, but we never know when it ends.”

Be sure to check which documents you are required to have per season because the penalties run high. The fine for navigating without navigation licence is EUR 550 and for exceeding the speed limits, the penalties start at EUR 95. On [www.cbr.nl](http://www.cbr.nl) you will find an overview of the navigation rules under Recreational Navigation.”

Remember to always stay alert on the water:

- Stay out of the blind corner of freighters. A rule of thumb: if you can see the skipper, he can see you too.
- Navigate on the starboard side as much as possible and keep the middle free for commercial vessels.
- Causing hindrance on the waterways is among the top 10 grievances.
- Monitor the surge and draught that your vessel creates.
- Regularly check behind you in order to stay aware of the water traffic.



## Marrekrite Recreational Authority: for sailing, cycling and walking

recreatieschap  
marrekrite

In Fryslân, you will find yourself surrounded by nature and in many of the most unique spots, you will find over 3,500 Marrekrite moorings. You can stay here free of charge for a maximum of three days. We also provide approx. 100 Marrekrite Buoys for mooring. Many of the Marrekrite Buoys are also poetic spots to anchor. On [www.marboei.frl](http://www.marboei.frl) you can read the poems that correlate to the buoys.

In addition to the waste water stations on shore, there are also three Húskes, or floating waste water stations: here you can moor, empty your tank and continue passage. *The Húskes* are also equipped with a free toilet.

All of these facilities are maintained by the Marrekrite Recreational Authority. They also manage the cycling and walking intersection networks. Many of the mooring places are located near these intersections so that you can enjoy a nice cycling or walking tour from your mooring.

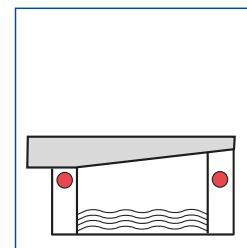
By purchasing a Marrekrite pennant, you contribute to the maintenance of the Marrekrite moorings. You can buy the pennant on the Marrekrite website, from volunteers in the field and at local points of sale.

[www.marrekrite.frl](http://www.marrekrite.frl)

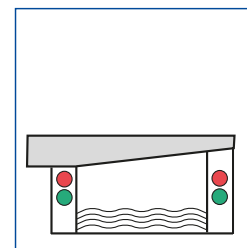


## Bridge signals

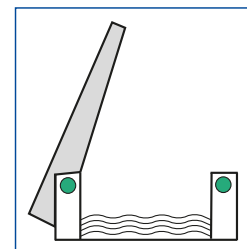
The lights at the bridges are red, green and yellow. With these, the bridge operator will signal the navigating vessels. These are the most important bridge signals.



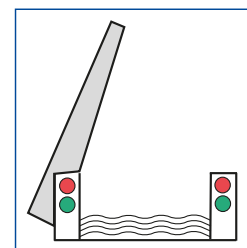
Passage prohibited



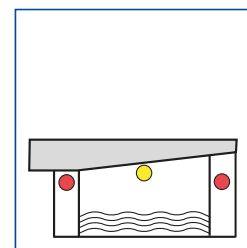
Passage prohibited, will be permitted directly



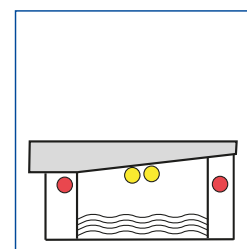
Passage permitted



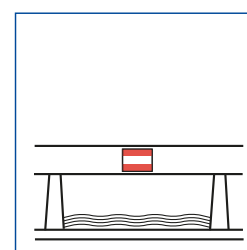
Passage prohibited, unless you have approached so closely that stopping is not reasonably possible



Passage with closed bridge permitted, oncoming navigation possible



Passage with closed bridge permitted, oncoming navigation prohibited



Prohibited navigation opening



## Traffic signs

Along the waterways there are signs with traffic symbols that indicate what is and what is not allowed. These are the most important signs.



Reduce speed is mandatory, as indicated by the km/hour



Prohibited to cause hindrance on the waterways



Mandatory to keep to the starboard side on the waterway



Prohibited to lay anchor or moor



Prohibited for sailing vessels



Marine radio for nautical information, such as channel 18



Mandatory to stop before the sign under certain circumstances



Mandatory to pay special attention



Limited passage height in meters



In, out or through passage prohibited



Meeting and walking by prohibited



Moorings for small vessels

## The Fryslân language for beginners

The Fryslân people love it when you try to speak their language. That is why we have listed a few handy words/sayings for you below.

**Goeie, ik bin ... en ik kom fan ...**  
Good day, I am .. and I come from ...

**Mei ik dy wat freegje?**  
May I ask you a question?

**Witstoo wêr't in restaurant/shop/cash machine/húske is?**  
Do you know where I can find a restaurant/shop/cash machine/bathroom?

<b>Wolkom</b>	Welcome
<b>Oant sjen</b>	See you soon
<b>Asjbleaft</b>	Please
<b>Noflike dei</b>	Have a nice day
<b>Tige tank</b>	Thank you
<b>Mienskip</b>	Society
<b>Stjoerboard</b>	Starboard (= right)
<b>Bakboard</b>	Port side (=left)
<b>Brêge</b>	Bridge
<b>Brêgewipper</b>	Bridge operator
<b>Fakânsje</b>	Vacation
<b>Sinne</b>	Sun
<b>Ferdivedaasje</b>	Enjoyment



If you would like to know more about the Fryslân language, people or province, download the "Taal fan it hert" app (via the App store or Google Play).



More information about the pennant and sailing in Friesland can be found at:  
[www.marrekrite.frl/wimpel](http://www.marrekrite.frl/wimpel) and [www.friesland.nl/watersport](http://www.friesland.nl/watersport).

## "Plain and clean sailing"

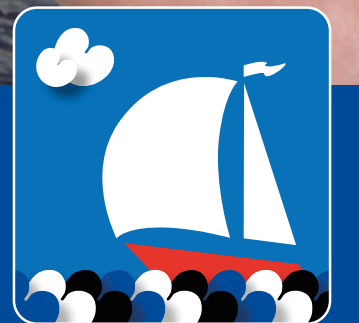
Help to fish litter out of the water! In 1979 and 1985, this was done under the title "Frisian lakes, fresh lakes". The cleaning campaign that was supposed to reduce pollution on the water back then is being revived.

With the purchase of a Marrekrite pennant from Marrekrite Recreational Authority, everyone enjoying water recreation will receive an Opperuimd Vaart Netjes (plain and clean sailing) rubbish bag from 1 January, in order to contribute to clean waterways.

The rubbish bag campaign is an initiative of Visit Friesland, Marrekrite Recreational Authority and the Frisian regional marketing organisations, Waterland van Friesland, Het Andere Friesland, Land in Friesland and Geïnspireerd door een Oude Zee.



Sailing in Fryslân?  
Download the free app Watersport!





## Recreational fishing in Fryslân

In Friesland there are many beautiful fishing spots. With over 17,000 hectares of fishing water, Friesland offers plenty of space for any kind of fishing. But before you go fishing you do need a VISpas. If you don't have one, you can buy a weekly permit at the tourist offices or angling shops in Fryslân.

[www.visseninfriesland.nl](http://www.visseninfriesland.nl)





## Colophon

**Editors and design:** Provincie Fryslân, Postbus 20120, 8900 HM Leeuwarden, [provincie@fryslan.frl](mailto:provincie@fryslan.frl)

**Photography:** Hoge Noorden, Merk Fryslân en Provincie Fryslân | **Druk:** Rekladruk, Gytsjerk, 26.000 exemplaren

Without the written permission of the Fryslân Province, it is prohibited to copy, transfer or duplicate anything from this publication in any way.

© Provincie Fryslân 2021

## Important telephone numbers

General emergency number:	112
Fryslân GGD (Municipal Health Services):	+31 (0)88 - 229 92 22
Centrale Reporting Centre IJsselmeer area:	+31 (0)88 - 79 73 300
Environmental alarm number:	+31 (0)58 - 212 24 22
(Water)Police:	0900 - 8844
Fryslân Province (general):	+31 (0)58 - 292 59 25
Fryslân province (waterway telephone):	+31 (0)58 - 292 58 88
Swim-bathing waters telephone:	+31 (0)58 - 92 56 50
Marrekrite Recreational Authority:	+31 (0)58 - 212 85 81
Sport fishing Fryslân	+31 (0)566 - 624 455
Fryslân Wetterskip (waterways)	+31 (0)58 - 292 22 22

## Important websites

Service hours bridges and locks: [www.fryslan.frl/bedieningstijden](http://www.fryslan.frl/bedieningstijden)

All you need to know about safe sailing: [www.varendoejesamen.nl](http://www.varendoejesamen.nl)

Swim-bathing water locations: [www.zwemwater.nl](http://www.zwemwater.nl)

Shipping/navigation information: [www.vaarweginformatie.nl](http://www.vaarweginformatie.nl)

Marrekrite Recreational Authority: [www.marrekrite.frl](http://www.marrekrite.frl)

Recreational fishing Fryslân: [www.visseninfriesland.nl](http://www.visseninfriesland.nl)

Province of Fryslân: [www.fryslan.frl](http://www.fryslan.frl)

## Twitter

Shipping/navigation Province of Fryslân: @ScheepvaartFRL

Waterpolitie Noord-Nederland: @toezichttewater

## Water sport app

We have a water sports app especially for sailors, yachtsmen and swimmers in Fryslân. With this, you always have the latest information at hand. Free download for iOS and Android. Check [www.fryslan.frl/watersport](http://www.fryslan.frl/watersport)

# Water sports map Fryslân

2021 - 2022 Edition



Discover the app Watersport  
Always up-to-date information on  
the water!  
Free available for iOS and Android.



## Frisian Wadden Islands

Vlieland



Terschelling



Ameland



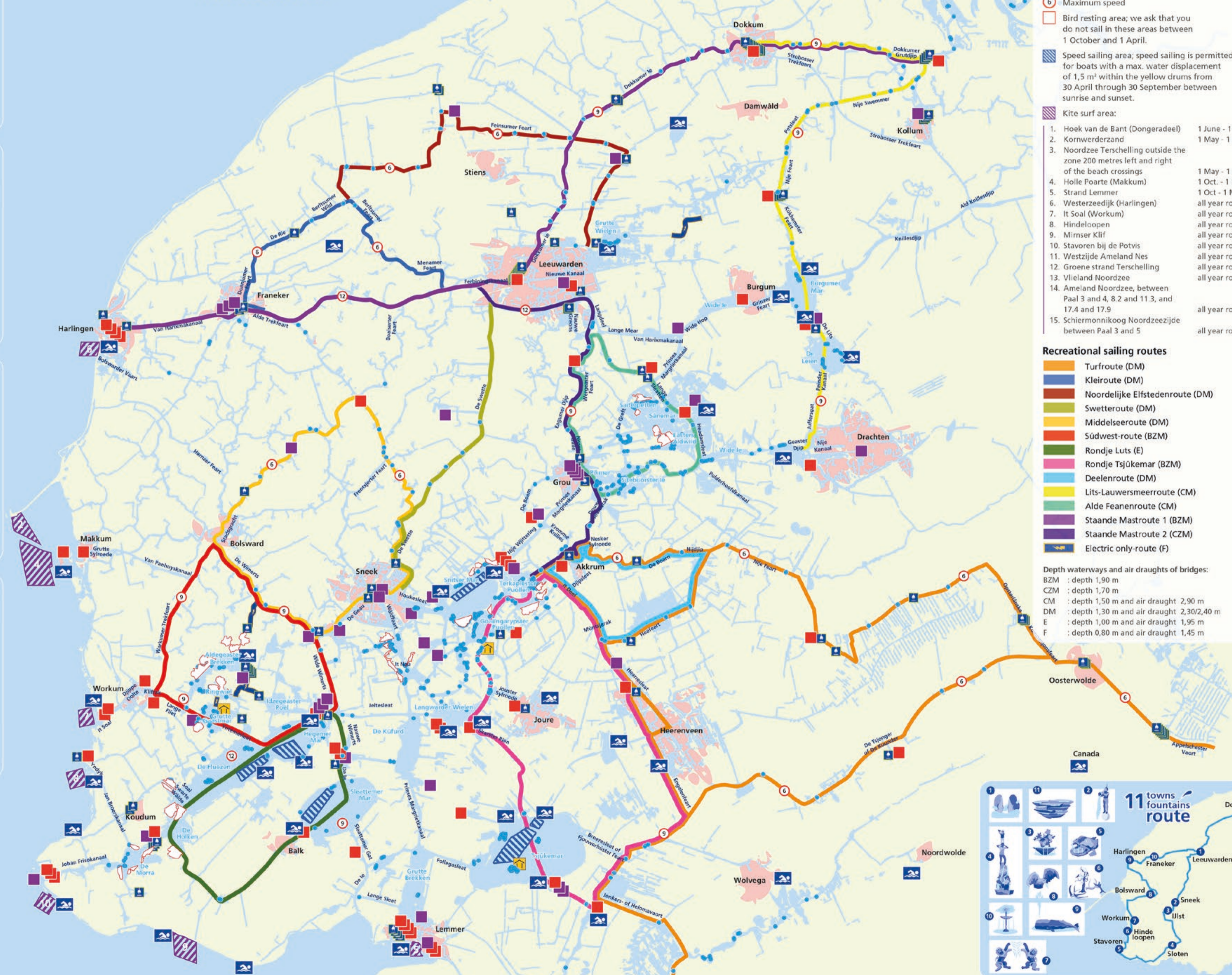
Schiermonnikoog



## IJsselmeer Lake

0 1 2 4 km  
Map: province of Fryslân  
Source: Kadaster/Fri

## Wadden Sea



### Legend

- Marrekrite berth
  - Swim-bathing waters
  - Waste water intake station
  - only toilet water
  - toilet water and bilge water
  - Waste water intake station and toilet
  - Charging station
  - Maximum speed
  - Bird resting area; we ask that you do not sail in these areas between 1 October and 1 April.
  - Speed sailing area; speed sailing is permitted for boats with a max. water displacement of 1,5 m³ within the yellow drums from 30 April through 30 September between sunrise and sunset.
  - Kite surf area:
- |  |                 |
|--|-----------------|
| 1. Hoek van de Bant (Dongeradeel)  | 1 June - 1 Oct. |
| 2. Kornwerderzand  | 1 May - 1 Oct.  |
| 3. Noordzee Terschelling outside the zone 200 metres left and right of the beach crossings | 1 May - 1 Oct.  |
| 4. Holle Poarte (Makkum)   | 1 Oct - 1 May   |
| 5. Strand Lemmer   | 1 Oct - 1 May   |
| 6. Westerzeedijk (Harlingen)   | all year round  |
| 7. It Soal (Workum)  | all year round  |
| 8. Hindeloopen   | all year round  |
| 9. Minsrer Klif  | all year round  |
| 10. Stavoren bij de Potvis   | all year round  |
| 11. Westzijde Ameland Nes  | all year round  |
| 12. Groene strand Terschelling   | all year round  |
| 13. Vlieland Noordzee  | all year round  |
| 14. Ameland Noordzee, between Paal 3 and 4, 8.2 and 11.3, and 17.4 and 17.9                | all year round  |
| 15. Schiermonnikoog Noordzeezijde between Paal 3 and 5                                     | all year round  |

### Recreational sailing routes

- Turfroute (DM)
- Kleiroute (DM)
- Noordelijke Elfstedenroute (DM)
- Swetteroute (DM)
- Middelseeroute (DM)
- Südwest-route (BZM)
- Rondje Luts (E)
- Rondje Tsjûkemaar (BZM)
- Deelenroute (DM)
- Lits-Lauwersmeerroute (CM)
- Alde Feanenroute (CM)
- Staande Mastroute 1 (BZM)
- Staande Mastroute 2 (CZM)
- Electric only-route (F)

Depth waterways and air draughts of bridges:  
 BZM : depth 1,90 m  
 CZM : depth 1,70 m  
 CM : depth 1,50 m and air draught 2,90 m  
 DM : depth 1,30 m and air draught 2,30/2,40 m  
 E : depth 1,00 m and air draught 1,95 m  
 F : depth 0,80 m and air draught 1,45 m

